



Document Solutions

> PRINT > COPY > SCAN > FAX

TASKalfa 2551ci

COLOR
MULTIFUNCTION PRODUCT
FOR A4/A3 FORMAT

COMPACT AND PRODUCTIVE, A MARK OF HIGH FUNCTIONALITY



The TASKalfa 2551ci has been designed to meet the demands of ambitious work groups with high expectations concerning the functionality and quality of their office equipment. Reliable and user-friendly, it provides you with all the capabilities you need to maximize the efficiency of your team's document management. The renowned long-life components incorporated in these devices make them exceptionally reliable and reduce the downtime to an absolute minimum.

- > Up to 25 pages per minute in A4 format
- > Standard network printing and color scanning
- > 3.5 GB RAM + 160 GB HDD memory and storage
- > Expandable fax functions : Internet Fax, Dual Fax Network Fax
- > Selectable one-path duplex and two different reversing document processors
- > Individual paper handling including productive finishing options and various paper feeders for up to 4,100 sheets



Born to be Extraordinary

KYOCERA Document Solutions is Extraordinary for

- Broad Range of Multifunction Devices and Printers
- Optimized Total Cost of Ownership (TCO)
- Reliable with Long Life Drum and Parts
- New and Advanced Technology

KYOCERA Document Solutions strives to be a Company that contributes to the society and demonstrates “Customer First” principle by providing customers with maximum value to increase their satisfaction. By adhering to the mission of producing document management devices that take balance between “Economy” and “Ecology”, KYOCERA Document Solutions succeeds to develop document management devices with advanced technologies which help customers to optimize office productivity and efficiency at a low total cost of ownership and, at the same time, improving environmental performance.

The Compact All-Rounder to Simplify Business Life

The new mid range A3 color document imaging multifunction is designed for easy copying, printing, scanning and to deliver high-quality in color and monochrome even on the go with minimum service required.

Based on KYOCERA’s renowned long life technology and by empowering user-centric features and functionalities, this easy-to-use, easy-to-manage device is perfect for small and medium-sized enterprises to enhance work efficiency and reduce operating costs.

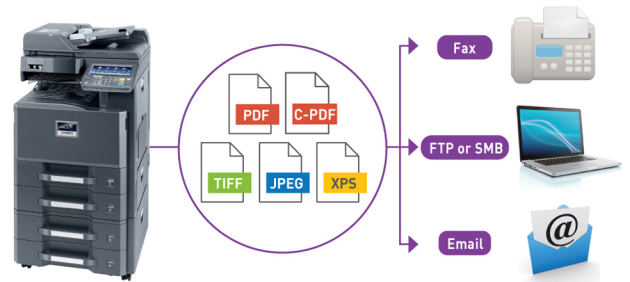
Support integrated and optional business applications, the capabilities of the device can be elevated to optimize your business document workflow whilst significantly reduce document and management related costs.

User-Centric Functionalities in COPY/PRINT/SCAN/FAX

For Achieving High Productivity and Operability in COPY/PRINT/SCAN/FAX

- **Skip Blank Page:** Blank page is skipped during copy at Document Processor to save unnecessary cost.
- **Auto Color Selection:** Cost-saving design for mono/color mix original documents copying.
- **Dedicated Preset Copy Mode for Special Original Media:** Newspaper Copy, Technical Drawing Copy, ID Copy, Highlighter Copy (reproduce fluorescent colors clearly).

- **FTP/SMB/Email/Fax Multi-Sending:** Send document to different destinations (email addresses, folders, etc.) in a single scan operation.



- **Simple Fax Forwarding:** Forward any incoming fax to other destinations by Email, SMB or FTP (Optional).



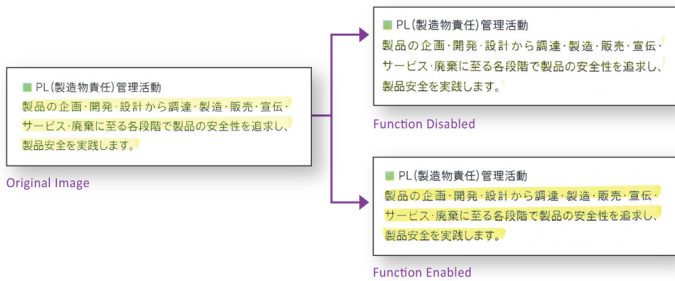
- **i-FAX Sending (Optional):** Send and receive i-FAX without the mail service by installing Direct SMTP function.

- **Job Skip:** Automatically prioritize the error print job to avoid machine coming to a halt in case of:

1. Paper empty in specific tray
2. Mismatched paper size
3. Mismatched media type

Received Order Order of Received JOBs				JOB Execution Order Order of Printed JOBs			
Sequence	Job	Paper Size	Status	Sequence	Job	Paper Size	Status
1	0001	A3	NG	1	0002	A4	OK
2	0002	A4	OK	2	0004	A4	OK
3	0003	A5	NG	3	0001	A3	NG
4	0004	A4	OK	4	0003	A5	NG

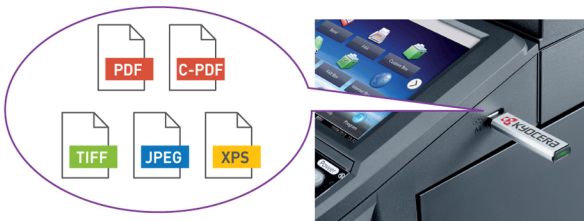
- **Job Finish Notice:** Send email notification to specific user when a copy/scan job is completed.



- **Prevent Bleed-thru:** Remove unwanted background when copying or scanning printed double-sized thin paper (e.g. newspaper, NCR paper, and magazine).

- **Carbon Copy:** Print an additional copy or copies of a document from a different media source or using a different media type.

- **USB Scan to/Direct Print:** Scan to or print directly from USB Memory in PDF, C-PDF, TIFF, JPEG or XPS format.



- **Bates Stamp:** Add customized stamp or default stamp (e.g. date/numbering/text/User ID) manually or automatically in printing/copying/sending to facilitate audit trail and identification of the output documents.

- **Thumbnail Image Preview:** Easy to check image preview when Stamp function or Form Overlay function is used.

- **Scan to Searchable PDF function (Optional):** Scan original paper document, separates texts and images via OCR function to convert texts into text data and composes PDF by combining the images and the text data. This facilitates reuse of PDF file and easily accessible using the search function in PDF file format.

- **High Compressed PDF Size:** Adopt new image analysis technology to achieve high compressed PDF to smaller file size.

- **Scanned Image File Size Check:** Check the actual scanned document size does not exceed limit before actual sending to e-mail.

Usability Design for Easy Operability

- **Intelligent Control Panel:** Excellent clarity 8.5 inch color touch panel display with swivel type operability similar to smart phone and tablet.
- **Home Screen:** All commonly used functions and applications are found on default Home Screen. The Home Screen can be customized easily to meet different user (or Group User) needs for immediate access to commonly used functions.
- **Printer Driver's Quick Print Tab:** Create and save frequently used custom profiles as graphic icons to allow programming of complex jobs in one click.
- **Custom Box:** Ease-of-use Custom Box provides long term job storage at device, allowing users to securely print and store jobs on the device and retrieve them when required.
- **Wireless LAN enabled (Optional):** Enhance flexibility for printing without LAN line.

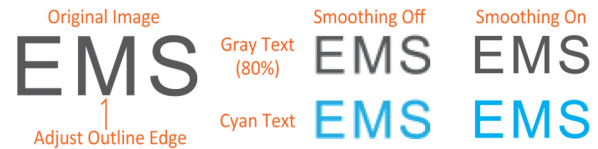


Versatile Finishing Unit to Optimize Productivity



Excellent Image Quality and Color Consistency

- **KYOCERA Image Refinement (KIR) technology:** Produce excellent black and color image quality with consistency.

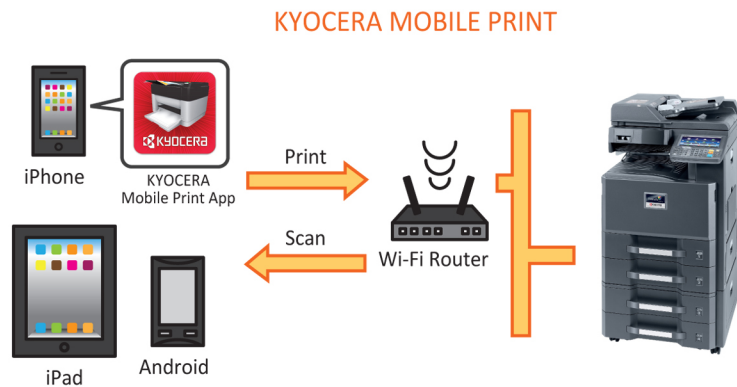


- **Multiple Image Adjustment Tools for optimal output:**

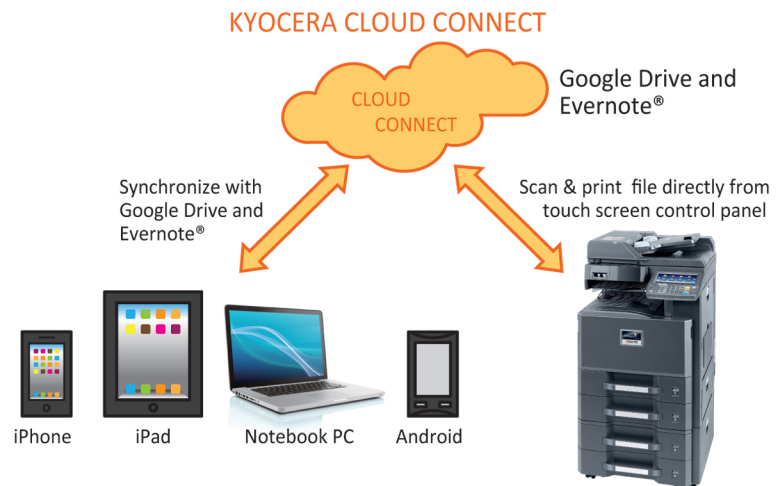
- **Color Optimizer at KYOCERA KX Driver:** Allow users to adjust the pixels near the color value or color space of defined areas instead of the entire image by selecting 2 from 3 parameters (Hue, Light, Saturation) and add up to 10 colors in each adjustment settings.

Creating a Mobile Workforce with Mobile & Cloud Solutions

- **KYOCERA Mobile Print:** An app-based solution that enables users to simply and conveniently print documents, web pages, and images on demand from virtually anywhere, on their Apple and Android smartphone and tablet devices to select KYOCERA MFPs and printers. Users can also scan files and images from same MFPs to their mobile devices. Our devices also support AirPrint for iPhone and iPad.



- **KYOCERA Cloud Connect (Optional):** Retrieve and print files in Google Drive and Evernote®, a cloud service provider, directly from any KYOCERA HyPAS-enabled MFPs. You can even upload scanned files directly to Google Drive and Evernote® – directly from the MFP, without going through a computer.



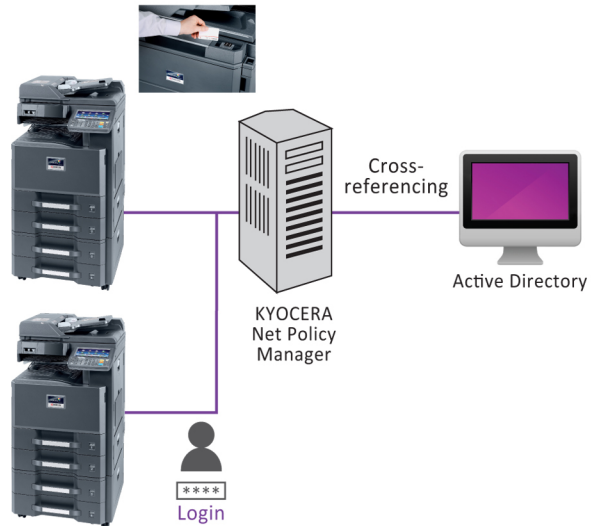
- **Support Gmail and Hotmail Public Mail Services:** Scan documents to email accounts from device and automatically print documents directly from accounts.

Multiple Systems for a Safe and Secure Documentation Workflow

- **Private Print:** Release print job at the device by entering a preset four-digit access code when making a print at KYOCERA KX Driver.
- **Password Protection Setting:** Allow administrator to set Password Policy to limit user access to designated capacity.

- **KYOCERA Net Policy Manager (Optional):** Give staff the flexibility to send a document to print then collect it whenever they want from whichever multifunction they prefer. This helps them avoid busy devices, prevents documents being collected by the wrong person.

If you add the Card Authentication Kit (Optional) for KYOCERA Net Policy Manager, you are able to swipe your ID Card to get your print document directly. User Administrator can also set the IC Cards to allow quick and secure access with pre-defined user restrictions such as color output restrictions and output quota.



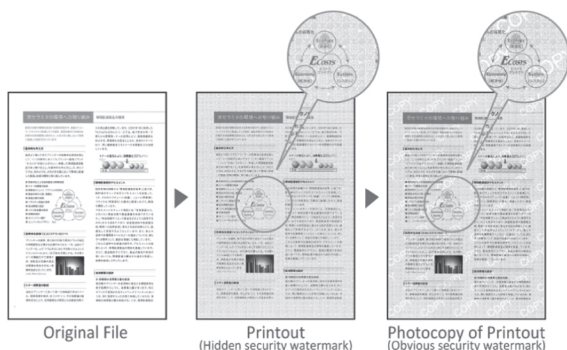
- With the aid of **Network Authentication**, IT Department can manage user authentication easily by incorporating with centralized Authentication Server (NTLM, Kerberos, KYOCERA Net Policy Manager*).



- **KYOCERA Data Security Kit (Optional):** Encrypt data before storing in the hard disk and automatically overwrite all data stored in the hard drive when the data becomes unnecessary.

- **FAX Memory Overwrite (Optional):** Erase FAX memory after sending or receiving for confidentiality.

- **Security Watermark:** Distinguish original from copies and provides protection for sensitive document against duplication.



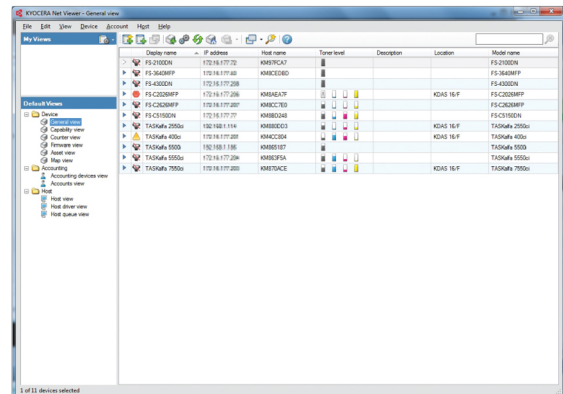
Maximize Savings, Minimize Cost

Smart utilities for managed print and minimize related device management costs

KYOCERA Command Center RX: By using a web browser, the authorized administrator can access the built-in KYOCERA Command Center RX and check the operation status of the device, toner level, paper availability, as well as change settings related to security, network printing and advanced network setting etc.



KYOCERA Net Viewer: A comprehensive network management tool used to monitor, maintain, and update up to 100 network printing devices locally and remotely. Through KYOCERA Net Viewer, administrators can simply install and update firmware on all KYOCERA connected devices while easily monitoring printed black/color pages, device configuration, accounting, toner usage, and alerts. By implementing KYOCERA Net Viewer, the manpower required to monitor your connected devices is greatly reduced.



Easy Lock (Optional): A simple solution that help you to control color copying of your MFPs.

1. Enter an access code to make color copy.
2. Press "Public Access" directly to make black & white copy.



Design for energy savings

Weekly Timer: Allow administrator to preset the machine on and off time to maximize power savings.

EcoPrint: Flexible EcoPrint setting to consume less energy and toner.

Energy Saver: 1.8w or less power consumption at deep sleep Mode.



Eco Mark (Japan)



EcoLeaf Environmental Label (Japan)



Law on Promoting Green Purchasing (Japan)

Design for a better environment

Leading Long-life Mega Surface Amorphous Silicon (A-Si) Drum, developer and replacement parts.

Parts for Recycling.

Non-toxic Materials.

Quiet operation design for a comfortable Working Environment.

KYOCERA Document Solutions has been actively promoting the acquisition of various environment labels, aiming to provide products that are safe and comfortable for our customers to use and have minimal environmental impact.

Main Specifications		
Model	TASKalfa 2551ci	
Main Function	Copy, Print, Scan, Fax (Optional)	
Writing Method	Semiconductor Laser	
CPU	Freescale QorIQ P1022 (Dual Core) / 800MHz	
Print Speed (A4)	Mono/ Color	25 / 25 cpm
Scanning Speed (A4) 300dpi	DP-770(B) (Mono/Color)	Simplex 65 / 65 ipm
		Duplex 39 / 39 ipm
Scanning Speed (A4) 300dpi Dual Scan	DP-772 (Mono/Color)	Simplex 70 / 70 ipm
		Duplex 100 / 100 ipm
Scanning Speed (A4) 300dpi	DP-773 (Mono/Color)	Simplex 48 / 48 ipm
		Duplex 15 / 15 ipm
Memory/ HDD Capacity	Standard 3.5 GB + 160 GB HDD	
Warm Up Time	30 seconds	
Paper Capacity	Standard	2 x 500 sheets (Cassette) + 100 sheets (MPT)
	Maximum	4,100 sheets (Main Unit + PF-810 + MPT)
Paper Size	Cassette	Min. A5R - Max. A3 / Ledger
	MPT	Min. A6R - Max. A3 / Ledger
Paper Weight	Cassette/ MPT	60 to 256 g/m ²
Duplex Printing	Paper size : A5R / Statement to A3 / Ledger; Paper weight : 60 to 220 g/m ²	
Dimension (W x D x H)/ Weight (Main Unit)	594 mm x 737 mm x 745 mm / Approx. 87.5 kg	
Power Consumption (Standard configuration)	Copy/Print Mode	Color : 590W / Mono : 550W or less
	Stand-by Mode	130W or less
	Energy Saver	1.7W or less
Noise (ISO7779/ ISO9296)	Copy/Print Mode	Mono : 67.75dB(A), Color : 68.5dB(A)
	Stand-by Mode	47dB(A)
Safety Standards: GS/TUV/CE	This unit is manufactured according to ISO 9001 quality standard and ISO 14001 environmental standard. RoHs compatibility	
Copy Functions (Standard)		
Copy Size/ Resolution	Max. A3 (Ledger) - Min. A6R / 600 x 600 dpi	
Job Separator	30 sheets (A4)	
First Copy Time (Mono/Color)	6.2 / 8.1 seconds	
Zoom Ratio	Manual	25% to 400% (1% per Step)
	Pre-defined	5R / 5E
Multiple Copy	1 to 999	
Print Functions (Standard)		
Resolution	600 x 600 dpi; 9600 x 600 dpi level	
PDL	PRESCRIBE, PCL6 (PCL-5e, PCL-XL), KPDL3 (PostScript 3 compatible), XPS, PDF Direct Print	
First Print Out Time (Mono/Color)	6.9 / 9.1 seconds	
Supported Protocol	NetBEUI, FTP, LPR, Port 9100, IPP, IPP over SSL, WSD Print, Bonjour	
Operating System Supported	Windows Server 2003, Windows Server 2008, Windows Server 2008 R2, Windows Server 2012, Windows XP, Windows Vista, Windows 7, Windows 8; Apple Macintosh OS 10.x	
Interface	USB2.0 High Speed x 1; 1000BASE-T / 100BASE-TX / 10BASE-T; USB Host interface (USB Host) x 4	
USB Memory Printing/ Format	Standard / TIFF, JPEG, PDF, XPS	
Print Features	Encrypted PDF Direct Print, IPP printing, e-mail printing, WSD print, secure printing via SSL, IPsec, SNMPv3, quick copy, proof and hold, private print, job storage and job management functionality	
Scan Functions (Standard)		
Color Selection	Auto Color (Color / Gray); Auto Color (Color / B&W); Full Color; Grayscale; Black & White	
Resolution	600dpi, 400dpi, 300dpi, 200dpi, 200 x 100dpi, 200 x 400dpi	
File Format	TIFF, JPEG, XPS, PDF, High-compression PDF, Searchable PDF (Optional)	
Image Type Mode	Text, Photo, Text + Photo	
Transmission Type	Scan to PC (SMB); Scan to E-mail (SMTP); Scan to FTP or FTP over SSL; Scan to USB; TWAIN Scan; WSD Scan	
Address Storage	2,000 addresses (Common address list), 500 groups (Group address list)	
Fax Functions (Optional)		
Original Size	Max. A3 (Ledger) - Min. A5 (Statement)	
Coding Method	MMR, MR, MH, JBIG	
Transmission Speed	33.6 / 31.2 / 28.8 / 26.4 / 24.0 / 21.6 / 19.2 / 16.8 / 14.4 / 12.0 / 9.6 / 7.2 / 4.8 / 2.4 kbps	
Memory	Standard : 12MB; Maximum : 120MB (with optional fax memory)	
Fax Features	Opt. Internet-fax, network faxing, rotate transmission, rotate reception, duplex reception, memory reception, FAX BOX, remote diagnostic, dual fax with second fax system	
Options		
Platen Cover	Platen Cover Type E	
Document Processor	DP-770 : 100 sheets RADF Type; DP-772 : 175 sheets One-path duplex scanning Type; DP-773 : 50 sheets RADF Type	
Paper Feeder	PF-791 : 500 sheets x 2 (A4/Letter); PF-810 : 1,500 sheets x 2 (A4/Letter)	
Finisher	DF-770 + AK-740 : 1,000 sheets Finisher; PH-7C : Punch Unit	
Fax System Option & Extension	Fax System (W) / Internet Fax Kit (A)	
Data Security	Data Security Kit (E)	
Card Authentication	Card Authentication Kit (B) / Card Reader Holder (E)	
Interface	IB-50 : Gigabit Ethernet Board / IB-51 : Wireless LAN	
Embedded OCR	Scan Extension Kit (A)	
Consumables & Maintenance Kit		
Toner Kit	TK-8329 (K) : 18,000 pages with 5% A4 coverage / TK-8329 (C / M / Y) : 12,000 pages with 5% A4 coverage	
Maintenance Kit	MK-8325 (A / B) : 200,000 pages with 5% A4 coverage	
Staple Cartridge	SH-10 : Staple for DF-770 5,000 pieces per cartridge	



KYOCERA Document Solutions Singapore Pte. Ltd.
12 Tai Seng Street #04-01A Luxasia Building Singapore 534118
Tel : (65) 6741 8733 Fax: (65) 6748 3788
www.KyoceraDocumentSolutions.com.sg

KYOCERA Business Partner



Scan for more information



www.KyoceraDocumentSolutions.com.sg

*KYOCERA Document Solutions does not warrant that any specifications mentioned will be error-free. Specifications are subject to change without notice. Information is correct at time of going to press. All other brand and product names may be registered trademarks or trademarks of their respective holders and are hereby acknowledged.